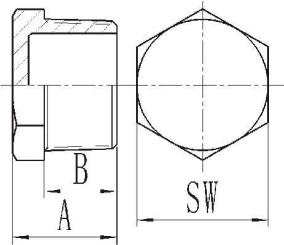
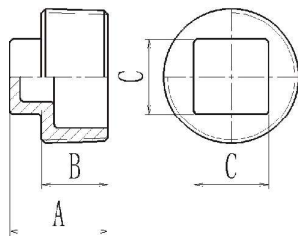


OHP112N Series - Hexagon Plug



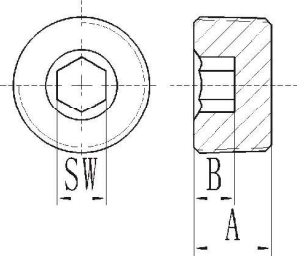
Size	Part No.		Dimension(in)				Weight
	304	316	A	B	SW	LB	
1/8	40HP112N018	60HP112N018	0.709 ± 0.016	0.461 ± 0.016	0.630 ± 0.039	0.03	
1/4	40HP112N014	60HP112N014	0.906 ± 0.016	0.661 ± 0.016	0.780 ± 0.039	0.06	
3/8	40HP112N038	60HP112N038	0.925 ± 0.016	0.689 ± 0.016	0.992 ± 0.039	0.07	
1/2	40HP112N012	60HP112N012	1.063 ± 0.020	0.791 ± 0.020	1.173 ± 0.039	0.11	
3/4	40HP112N034	60HP112N034	1.079 ± 0.020	0.795 ± 0.020	1.425 ± 0.039	0.17	
1	40HP112N010	60HP112N010	1.339 ± 0.020	1.004 ± 0.020	1.783 ± 0.039	0.24	
1 1/4	40HP112N114	60HP112N114	1.386 ± 0.024	1.024 ± 0.024	2.087 ± 0.039	0.34	
1 1/2	40HP112N112	60HP112N112	1.417 ± 0.024	1.016 ± 0.024	2.362 ± 0.039	0.48	
2	40HP112N020	60HP112N020	1.457 ± 0.031	1.004 ± 0.031	2.913 ± 0.039	0.72	
2 1/2	40HP112N212	60HP112N212	1.909 ± 0.039	1.429 ± 0.039	3.327 ± 0.039	1.34	
3	40HP112N030	60HP112N030	1.988 ± 0.039	1.476 ± 0.039	4.331 ± 0.039	1.92	
4	40HP112N040	60HP112N040	2.028 ± 0.039	1.457 ± 0.039	5.476 ± 0.039	2.69	

OSQ112N Series - Square Plug



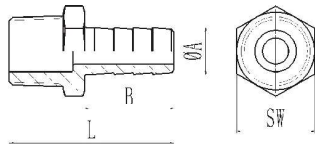
Size	Part No.		Dimension(in)			Weight
	304	316	A	B	C	
1/8	40SQ112N018	60SQ112N018	0.709 ± 0.016	0.433 ± 0.016	0.276 ± 0.020	0.02
1/4	40SQ112N014	60SQ112N014	0.744 ± 0.016	0.461 ± 0.016	0.354 ± 0.020	0.03
3/8	40SQ112N038	60SQ112N038	0.787 ± 0.016	0.563 ± 0.016	0.378 ± 0.020	0.06
1/2	40SQ112N012	60SQ112N012	0.925 ± 0.020	0.512 ± 0.016	0.512 ± 0.020	0.06
3/4	40SQ112N034	60SQ112N034	1.181 ± 0.020	0.709 ± 0.020	0.720 ± 0.024	0.12
1	40SQ112N010	60SQ112N010	1.280 ± 0.020	0.787 ± 0.020	0.748 ± 0.024	0.17
1 1/4	40SQ112N114	60SQ112N114	1.535 ± 0.024	0.886 ± 0.024	0.906 ± 0.024	0.26
1 1/2	40SQ112N112	60SQ112N112	1.587 ± 0.024	0.913 ± 0.024	1.043 ± 0.028	0.35
2	40SQ112N020	60SQ112N020	1.752 ± 0.031	1.020 ± 0.031	1.161 ± 0.028	0.57
2 1/2	40SQ112N212	60SQ112N212	1.890 ± 0.039	1.122 ± 0.039	1.559 ± 0.031	0.82
3	40SQ112N030	60SQ112N030	2.161 ± 0.039	1.260 ± 0.039	1.740 ± 0.031	1.21
4	40SQ112N040	60SQ112N040	2.362 ± 0.039	1.476 ± 0.039	2.343 ± 0.031	2.02

OSP112N Series - Hexagon Socket Plug



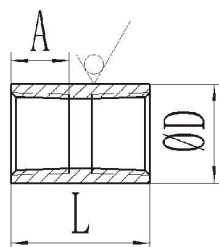
Size	Part No.		Dimension(in)			Weight
	304	316	A	B	SW	
1/16	40SP112N0116	60SP112N0116	0.315 ± 0.016	0.134 ± 0.012	0.167 ± 0.012	0.01
1/8	40SP112N018	60SP112N018	0.315 ± 0.016	0.173 ± 0.012	0.203 ± 0.012	0.01
1/4	40SP112N014	60SP112N014	0.441 ± 0.016	0.252 ± 0.012	0.270 ± 0.012	0.02
3/8	40SP112N038	60SP112N038	0.500 ± 0.016	0.256 ± 0.012	0.327 ± 0.016	0.04
1/2	40SP112N012	60SP112N012	0.551 ± 0.020	0.295 ± 0.016	0.394 ± 0.016	0.06
3/4	40SP112N034	60SP112N034	0.614 ± 0.020	0.350 ± 0.016	0.583 ± 0.020	0.10
1	40SP112N010	60SP112N010	0.748 ± 0.020	0.413 ± 0.016	0.654 ± 0.020	0.20
1 1/4	40SP112N114	60SP112N114	0.807 ± 0.024	0.433 ± 0.016	0.772 ± 0.024	0.38
1 1/2	40SP112N112	60SP112N112	0.862 ± 0.024	0.492 ± 0.016	1.024 ± 0.028	0.44
2	40SP112N020	60SP112N020	0.925 ± 0.031	0.500 ± 0.016	1.004 ± 0.028	0.96

HONE115N Series - Hose Nipple



Size	Part No.		Dimension(in)				Weight
	304	316	L	A	B	SW	
1/4	4HON115N014	6HON115N014	1.67	0.35	1.10	0.59	0.02
1/2	4HON115N012	6HON115N012	2.26	0.59	1.50	0.87	0.05

OFC111N Series - Full Coupling



Size	Part No.		Dimension(in)		
	304	316	L	D	A
1/8	40FC111N018	60FC111N018	1.00	0.55	0.31
1/4	40FC111N014	60FC111N014	1.00	0.73	0.39
3/8	40FC111N038	60FC111N038	1.12	0.85	0.43
1/2	40FC111N012	60FC111N012	1.38	1.05	0.57
3/4	40FC111N034	60FC111N034	1.50	1.25	0.59
1	40FC111N010	60FC111N010	1.62	1.56	0.67
1 1/4	40FC111N114	60FC111N114	2.00	1.91	0.83
1 1/2	40FC111N112	60FC111N112	2.12	2.17	0.83
2	40FC111N020	60FC111N020	2.50	2.62	0.94
2 1/2	40FC111N212	60FC111N212	2.87	3.33	1.18
3	40FC111N030	60FC111N030	3.18	3.96	1.22
4	40FC111N040	60FC111N040	3.68	5.10	1.42

Dimensional tolerances are as per ISO 8062-3:2007 CT7 (for Castings) and ISO 2768-1:1989/M (for Machining)